

Installing Norden Lab Product Keys

In order to activate Norden Lab Professional, Norden Lab Network Client/Server and/or Norden Lab Web you need to obtain a valid license key from your reseller or distributor. The license product key file names are:

- **LabPro.loc** Norden Lab Professional
- **LabNetClient.loc** Norden Lab Network client software
- **LabNetServer.loc** Norden Lab Network server software
- **LabWebServer.loc** Norden Lab Web server software

From these four files LabNetClient.loc is generally not installed on the same machine connected to a Bioscreen C device acting as a server.

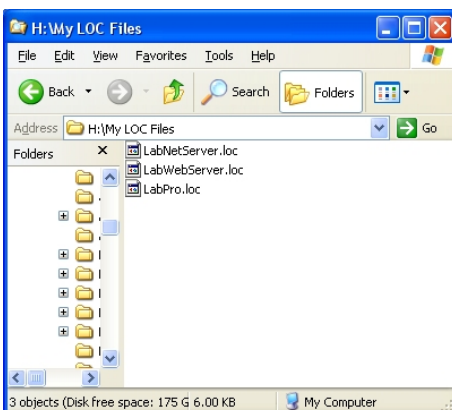
Installation

You should have received your product key(s) in ZIP compressed files from your distributor. Unzip the file into any temporary folder. If you received multiple network client product keys they will be in differently named ZIP files e.g. NetClient1.zip NetClient2.zip etc. Please note that the LOC file within those ZIP files have the same names. Be careful when unzipping the files in order not to overwrite any previous unzipped file. Each network LOC file is meant to be installed on network client machine.

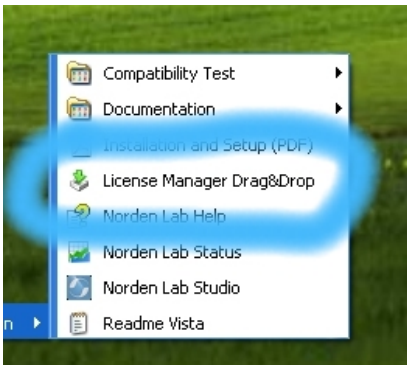
After the files have been unzipped in the folder of your choice you can either copy the files manually from the unzipped location to the Norden Lab Professional installation folder or you can use our License Install Manager Drag&Drop.

Using the License Manager

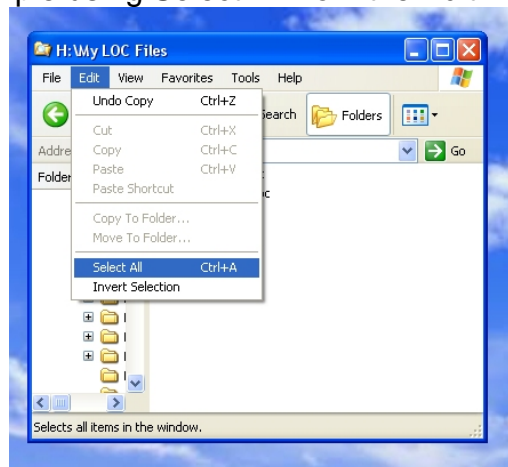
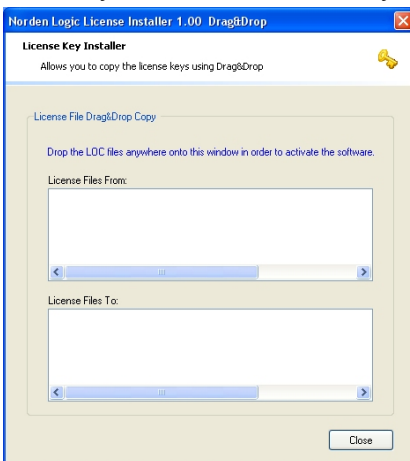
1. Locate the folder where you had unzipped the license products keys to.



2. Start the License Manager Drag&Drop by selecting Start->All Programs->Norden Lab->Professional Bioscreen C Edition->License Manager Drag&Drop.



3. After the License Manager has started go to your file Explorer and select all the LOC files you want to install by for example using Select All from the Edit menu of the file Explorer.



4. Click and hold the right mouse button on the selected files and drag them anywhere onto the License Manager window. The mouse cursor will change to a drag&drop type when it is o.k. to drop the files. Simply release the mouse button and the license LOC files will be copied and installed in the correct place.

