

Norden Lab Installation and Setup

Installation and initial setup of Norden Lab Professional - Bioscreen C Edition is simple and straight forward. Please follow the steps outlined below. Make sure you have checked the [Requirements](#) section in this document and that your machine fulfills the listed items.

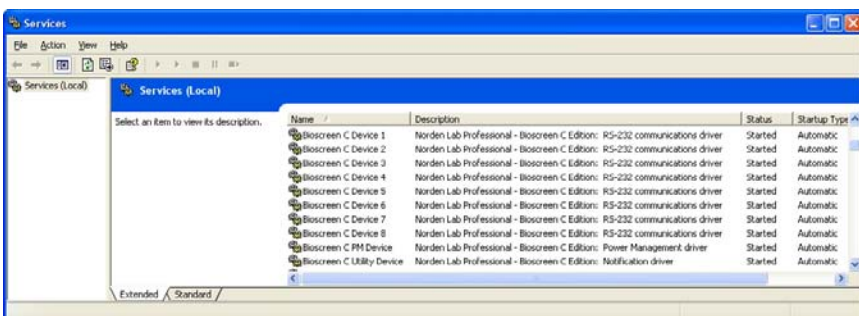
Important: Installation and Setup will only succeed if you have computer **admin** or **local admin** rights. Please also note that under Windows Vista additional steps may need to be taken in order to have the necessary rights to install new software. Please consult Microsoft's documentation for more information on installing new software under Windows Vista and consult your computer administrator.

Important: Ideally the users using Norden Lab Professional should have **local admin** rights when using the system. If that is not possible the users need to have **full** control access rights enabled for the Norden Lab Professional folder and sub-folders. Please consult with your computer administrator.

Installation

1. Start *Setup* from the distribution CD or from your download directory if you have downloaded Norden Lab Professional - Bioscreen C Edition from the web.
2. Make sure you have connected all cables to the Bioscreen C devices and that the machines are fully functional and powered on.
3. Follow the on-screen instructions during the setup process.
4. *Setup* will install the client and server components. After a successful installation your Services control module should have the following entries:

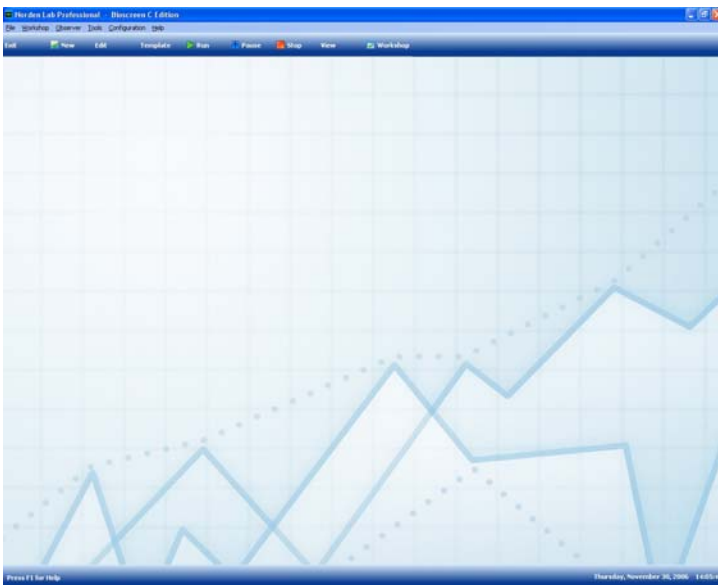
Eight (8) Bioscreen C drivers, a Power Management driver to prevent hibernation and sleep modes of the host computer as well as a Notification driver which handles system popup and email notifications.



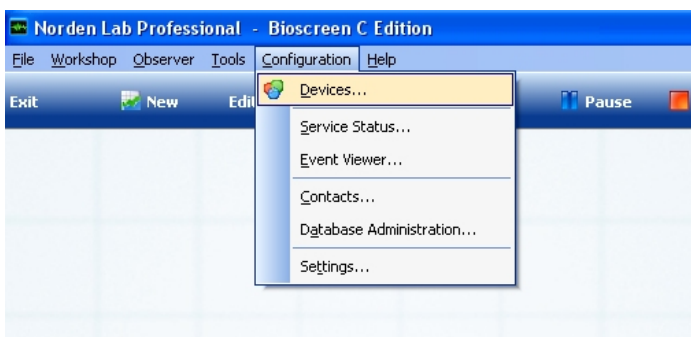
5. If you received **license keys** (e.g. *abc123.loc*) with the product please copy them to the same folder where Norden Lab Professional - Bioscreen C Edition resides in order to activate the software. For first time installations without a valid license key a **30 days evaluation period** will be activated.

Setup

1. After a successful installation Norden Lab Professional needs to be configured.
2. Start Norden Lab Professional

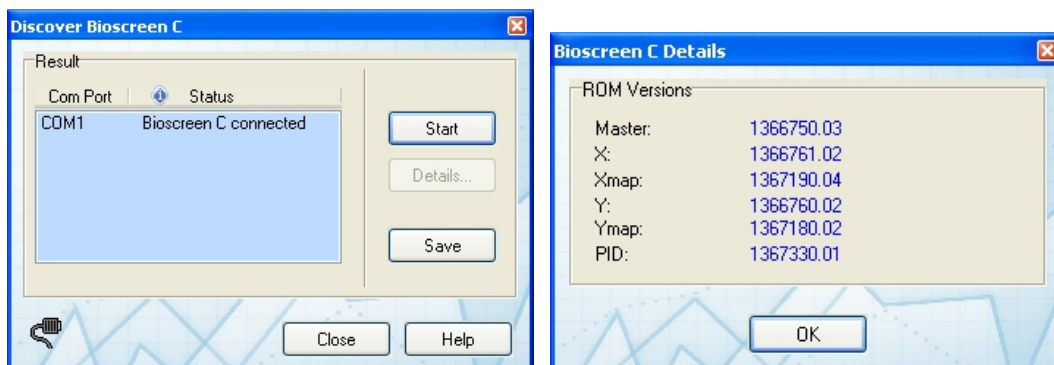


3. From the *Configuration* menu select *Devices*.

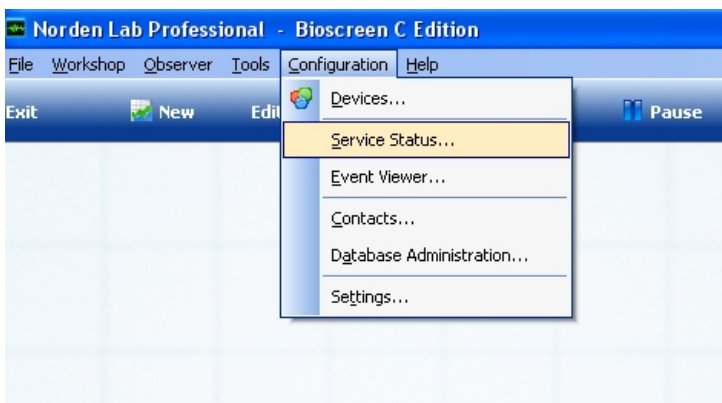


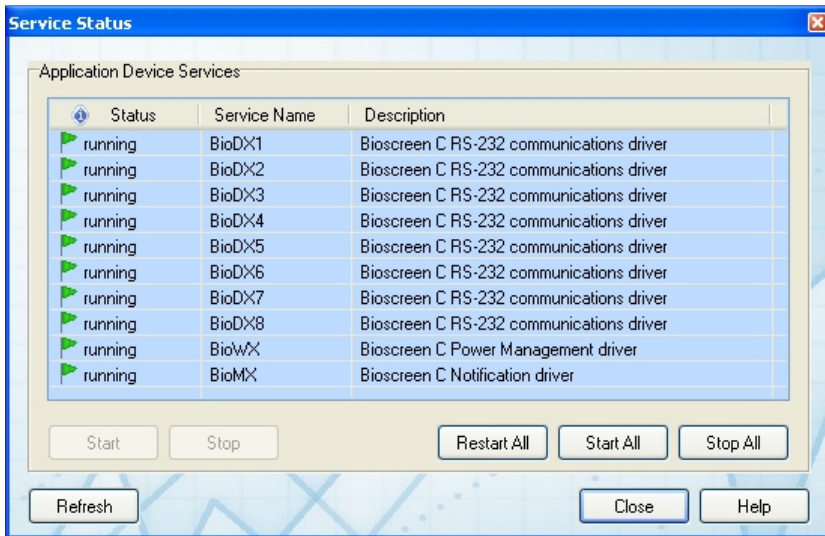
4. The *Device Configuration* dialog box provides you with two options. If you know on which RS-232 communications port the Bioscreen C machines are connected to, select *Manually Define Ports* and fill in the correct port number. Select *Save* to complete the operation. If

you don't know the port number select *Automatic Discovery* and select start in the *Discover Bioscreen C* dialog box. All connected Bioscreen C devices will be found and displayed. If you want to find out more information about a particular Bioscreen C devices, select the device and click on *Details* (see examples below). The firmware versions of the chosen machine will be displayed in a separate dialog box. Make sure to click on *Save* and then return to the *Device Configuration* dialog box by clicking on *Close*. To complete the operation click also on *Close* in the *Device Configuration* dialog box.

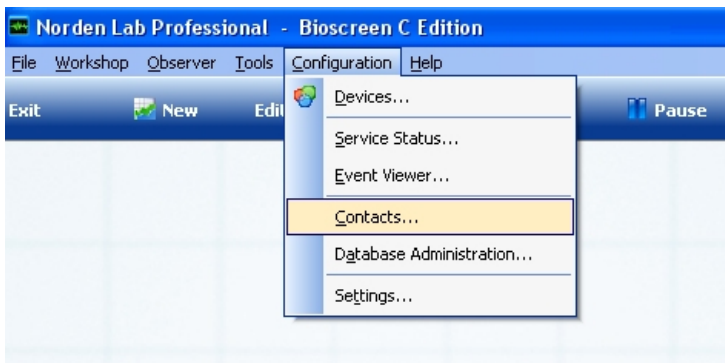


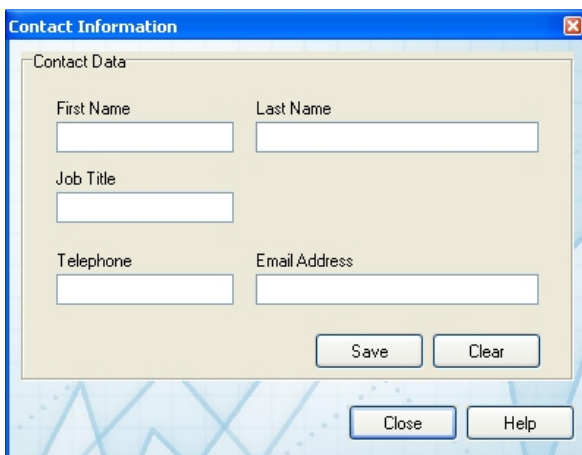
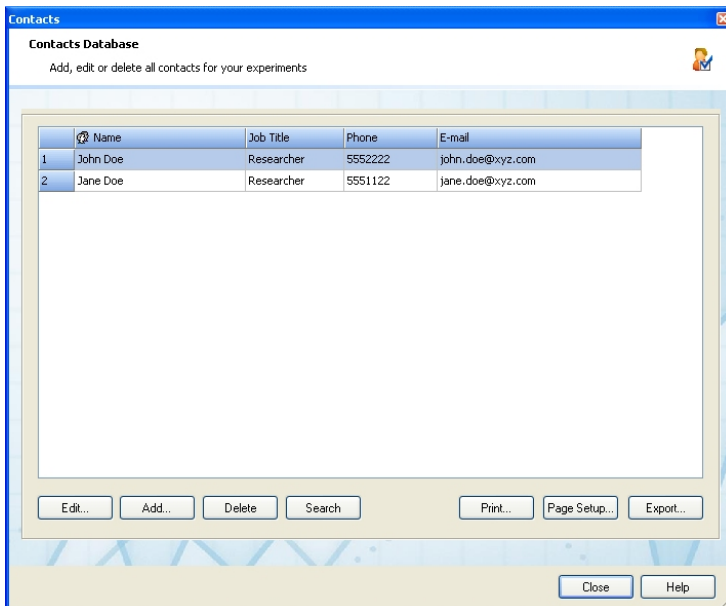
- From the *Configuration* menu select *Service Status* to check if all the installed device drivers are available and running (see examples below).



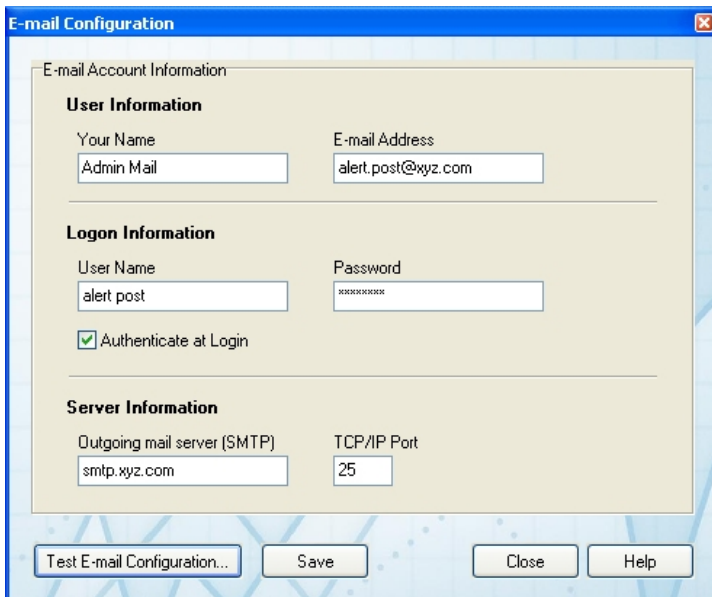
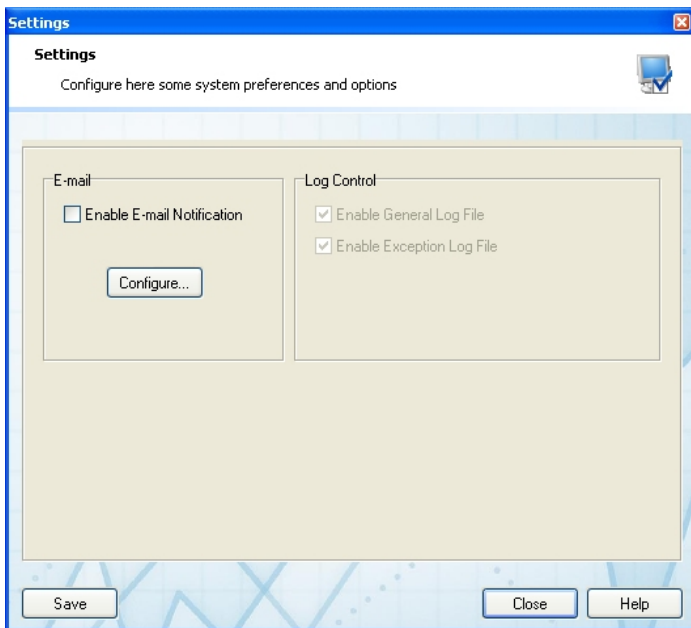
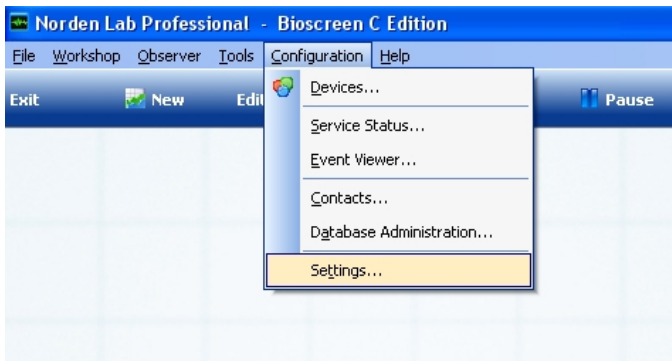


- From the *Configuration* menu select *Contacts* to add some user information needed for experiment information as well as for notification. Click on *Add* in order to add a new user. Fill in all needed information in the *Contact Information* dialog box and click *Save* when done (see examples below).





- From the *Configuration* menu select *Settings* in order to configure additional options in particularly email notification support. In the *Settings* dialog box click on *Configure* to bring up the *E-mail Configuration* dialog box. You will need to have a valid email address and know how to configure SMTP email settings for your email environment. The email notification service is outgoing only. No incoming mail is processed. Make sure to test your mail setting by clicking on *Test E-mail Configuration*. Click on *Save* before closing the dialog box. Click on *Enable E-mail Notification* if you want to receive mail notifications and finally click on *Save* before closing the dialog box (see examples below).



8. Norden Lab Professional is now ready for the first experiment.

Requirements

Norden Lab Professional has the following hardware and software requirements:

OS: Microsoft Windows 2000/2003/XP/XP64/Vista/Vista64 and its variants

Processor: Intel Pentium II 500MHz or faster, AMD processor family 500MHz or faster

Memory: 512MB or more

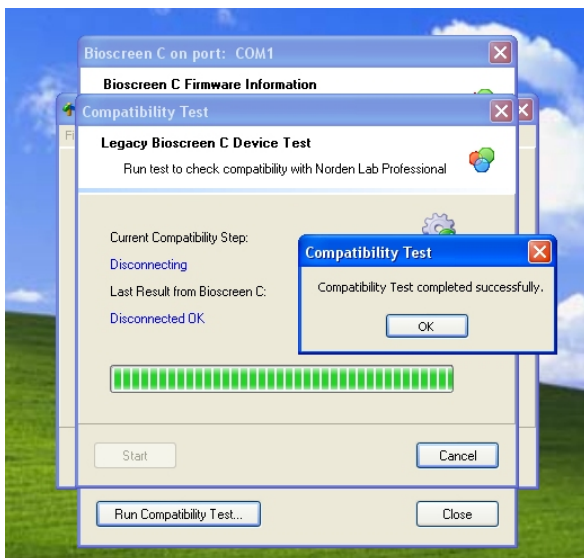
Drives: DVD/CD-ROM drive, 40GB hard disk or larger

Graphics: minimum 1024x768 resolution, minimum of 16-bit color (65K colors), 32-bit color recommended

I/O: RS-232 serial communications port (16550 UART or compatible), multi-I/O card such as MultiTech ISI multiport serial card, high speed serial RS232 to USB adapter/converter

Device: Bioscreen C MBR and RS-232 serial cable

If the Bioscreen C device is very old, please run our [Compatibility Test](#) program available from the download section at our web site at: <http://www.nordenlogic.com>.



Revision 1.0A/1206